

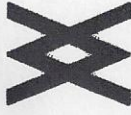
ORIGINATE WITH THIS PLAN.
FINAL APPROVAL IS REQUESTED FOR LOTS AS PARKLAND.

SURVEYOR'S CERTIFICATE:

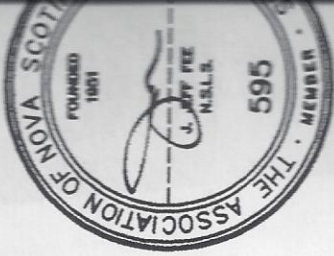
I, J. JEFF FEE, NOVA SCOTIA LAND SURVEYOR, THE SURVEY REPRESENTED BY THIS PLAN UNDER MY SUPERVISION AND THAT THE SURVEY AND PLAN ARE CORRECT AND ACCURATE IN ACCORDANCE WITH THE NOVA SCOTIA LAND SURVEYORS ACT THEREUNDER.

DATED THIS 23RD DAY OF OCTOBER, 1996.

J. JEFF FEE, N.S.



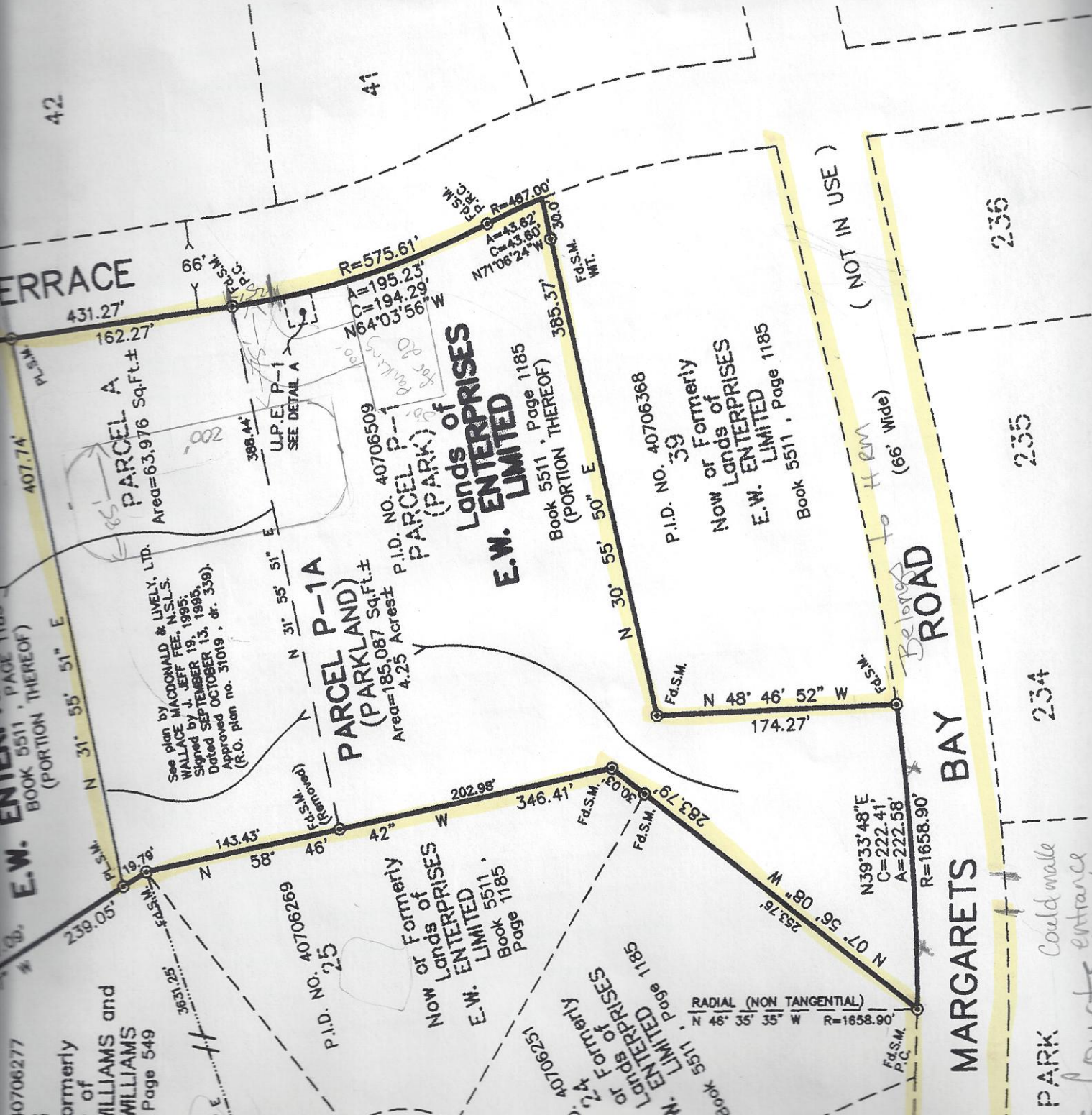
**Wallace
Macdonald &
Lively, Ltd**
Bedford, Nova Scotia



HIGHLAND PARK WEST PHASE 1

Plan of Survey of
**LOTS 35 and 36 and
PARCEL P-1A (PARKLAND)**
Being a Subdivision of
BLOCK EW-2 and PARCEL P-1
Lands of **E.W. ENTERPRISES**
TIMBERLANE TERRACE and
OLD ST. MARGARETS BAY
HAMMONDS PLAINS (YANKEETO)
HALIFAX REGIONAL MUNICIPALITY
PROVINCE OF NOVA SCOTIA

SCALE: 1 INCH = 100 FEET
1996



① Walking Trails (cont)